

Cash Register Polling Software, Inventory and Interface Modules to Help You Take Control of Your Inventory



Make the Connection

Free Online Demo

PC Poll

PC/Poll is polling and programming software that helps businesses of all sizes--from mom and pop shops to franchisees with hundreds of locations--collect and utilize information from electronic cash registers (ECRs).

The Polling software does more than just basic data collection. It also helps business owners transform their data into a meaningful informational tool that can be used to help them grow and succeed. Register program data can be brought back to the PC and the Polling software can be used to make additions and changes quickly and easily. Then those changes can be sent down automatically to one or multiple stores. Report data can be collected, viewed, printed and even exported to other software modules to allow users complete control of their sales information. The Polling software can connect to cash registers in the same location as the PC or remote connections can be used to connect one PC to registers around the world.

PC/Poll works with Casio, Sam4s, Sharp and Toshiba TEC America cash registers. The PC/Poll Polling software also integrates with AIMsi for inventory control and management, for retailers using an electronic cash register who would like the more robust features of AIMsi's inventory software.



The PC/POLL Polling software connects to the register to collect the data. Once back at the PC there are limitless ways to utilize the data to better manage your business. Below is a brief listing of the various interface options offered by Tri-Tech.

Interfaces

AIMsi - More than the typical 'off-the-shelf' inventory software. AIMsi interfaces with PC/POLL to take the polled data to the next level. AIMsi offers a wide variety of reporting tools, as well as advanced operations to auto-calculate recommended max./min. values and to allow users to connect the software to hand-held data collection devices for importing on-hand & physical inventory values. The retailer may even use the AIMsi interface to PC/POLL on select workstations and use AIMsi as the POS at other workstations.

Active-e – Connect your inventory solution to the web. Active-e is an e-commerce software solution that partners with AIMsi for an enhanced web presence for retailers.

QB Interface – Transfer program and report data to QuickBooks to create an interface between register data and the accounting abilities of Quickbooks.

Archive Agent – Archive, delete, restore and transfer previously created Polling data files. Archive Agent is a file management tool.

XIs Export Wizard – Transfer collected Polling report data to Excel. Design custom spreadsheets and have the software automatically or manually populate the file with previously collected report values.

DenView500 – Keep track of the item usage on assembled items. Transfer basic sales data from Polling to DenView to see how much of each component item is used.

PC/Capture – Connect to your register to collect real-time journal data. Watch sales data as it is transmitted to help catch operational errors and theft.

Making programming changes manually at a cash register can be time consuming and difficult. It also ties up the registers from being used to conduct sales. By using the V7 Polling software, making changes is quick and easy. Users can make edits to the software at any time during the business day and then send those edits down whenever it is convenient, or automatically schedule events to run at the end of the day. In addition to file editing, the Polling can be used to collect critical report data from the cash registers. Reports can be polled on demand to spot check information or conducted automatically after business hours. Having the data at the PC gives you complete control to check sales numbers, look for operational errors and to view historical information.

Version 7 Polling

Polling Features

Checkbox style communication selections allow the user to quickly multi-select programs to save, to send or reports to poll on demand.

Easy to access menus, most recent recall lists and icon buttons to help users intuitively use the software.

Create Scripts, Schedules and setup the Calendar for automatic polling options.

Security and login options to help safeguard data.

The software can be used on a standalone PC or on a network.

Registers can be polled locally or remotely, all from 1 PC. The software supports direct, modem and TCP/IP connections.

Multiple user preferences to let you run the software the way that best fits your business. Custom exporting options. Screen display and functionality selections. User defined classes can be created to allow for quick sorting and searching options.

The software displays the register's program data in both grid and detail formats for easy editing. Checkboxes and pop-up menus make it easy to edit existing items and create new ones.

Mass Update allows users to update and edit many items simultaneously.

Mass Create is a tool that can rapidly generate hundreds of new items through the use of PLU templates.

PLU Sale options offer the user flexibility to design their own product sales. Users can select the items and sale time

periods. Prices can be changed manually or incremented/decremented by a set amount or a percentage.

Barcode printing to standard label sheets/barcode printers.

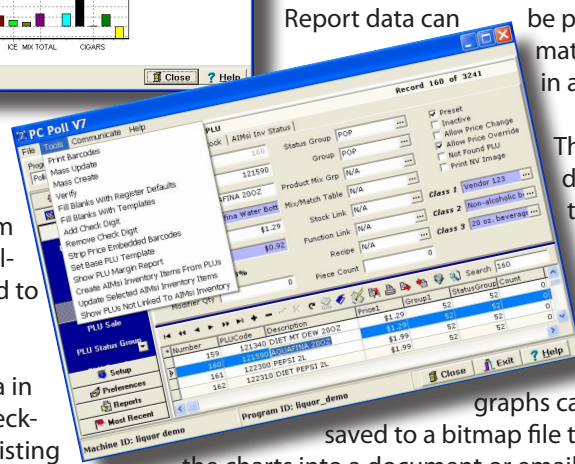
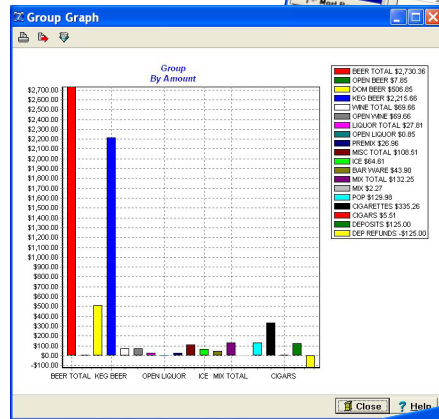
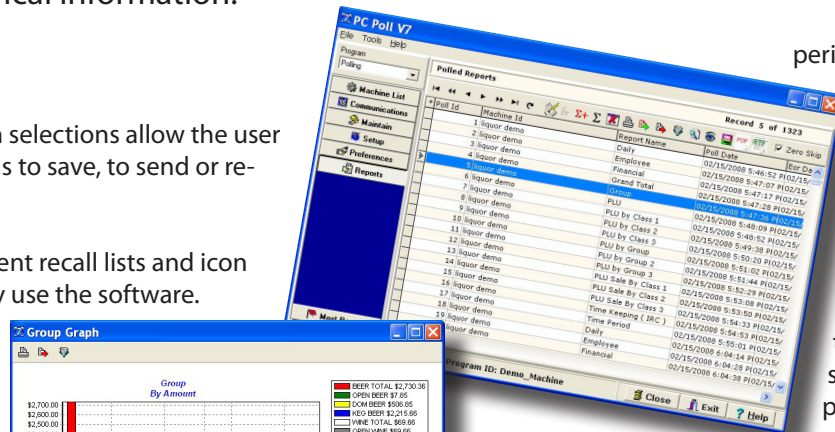
Share data between machines to save time editing identical items.

Classes (user groups) for quick filtering, searching, sorting, updating and even reporting.

Report data can be programmed to automatically export or email data in a variety of formats.

The software stores report data until it is deleted by the user. Users can quickly view, print and export previously collected report data. The software also includes a graphing function. These report graphs can be viewed, printed and saved to a bitmap file to allow the user to insert the charts into a document or email.

Report consolidation allows users to generate their own week-end, month-end and year-end reports. Report totals may be viewed, printed and even exported to a text, pdf or csv (Excel comma separated) file for later viewing.



AIMsi INVENTORY

INVENTORY CONTROL

Inventory Control Enables you to have complete access to available inventory. Group/Department, Class and item report

Sales staff can 'view inventory' and determine what is available. When viewing the inventory, sales staff can determine the number of days the item has been in stock, prices and other pertinent information that will facilitate sales. Inventory searches can be performed by a number of key identifying fields.

Inventory interfaces directly with Version 7 Polling. Item information,

data can be transferred between the two systems. AIMsi features can also be used on their own to give business owners enhanced flexibility to control their business as needed.

The inventory you purchase from your vendors is sometimes based on impulse, emotion or perceived savings through sales hype from the vendors. AIMsi eliminates these influences because

the inventory optimization features are based on what you are selling. These automated procedures will replace the pen, paper and calculator approach to determining what to order, the quantities to order and the right time to order. They are designed to keep your store stocked with items that sell. Stock orders and seasonal orders can be generated in minutes. (Purchase Order and Accounts Payable/General Ledger modules can be purchased separately and integrated seamlessly with AIMsi.)

Inventory Features

Inventory tracking for all various item types: PLU, scanning Items, single/six-pack/case and store supply items. Display entire history of an inventory item in one program, including sales, transfer and receiving history.

Update or add items in either Polling or AIMsi and have the applicable fields automatically synchronize to keep both systems up-to-date.

Have Polling automatically transfer sales report data over to inventory for quick and easy stock reduction.

Set up unit of measure for purchasing items.

Establish minimum selling prices by model or individual sku #.

Run a report by type of inventory showing sales, cost of goods sold,

gross profit (\$ or %), average inventory, inventory turns, sales as % of total sales, inventory as % to total inventory and gross margin return on inventory.

Automatically establish min/max/s for items with our automatic inventory optimization process.

Interface with hand-held data collection devices to create an import file for receiving and physical inventory.

Sku	Description	Manufacture	Model	Qty	Our Price	Typ Set
10	Napkins	No Mfg	10	1200	2.99 A	03
101	Paper towels	No Mfg	101	113	6.70 A	03
102	Paper towels	No Mfg	102	19	4.99 A	03
103	Paper Bags	No Mfg	103	18	5.99 A	03
10343814080	Chicken Broth	No Mfg	10343814080	74	6.75 A	
11229421877		No Mfg	11229421877	72	8.80 A	
122210	Pack of Socks	No Mfg	122210	50	3.99 A	02
122456789452	Family Socks B	No Mfg	122456789452	50	3.99 A	02
123456	MP2 Player	No Mfg	123456	75	28.99 A	
12345678901	Tuna	No Mfg	12345678901	100	0.65 A	
145295896538	Family Socks G	No Mfg	145295896538	50	3.99 A	02
2	Paper plates	No Mfg	2	116	4.50 A	03
21139	Tea shirt pack	No Mfg	21139	50	4.99 A	02
21200175022	Power Scissors	No Mfg	21200175022	96	6.89 A	
222	Test Paper	No Mfg	222	0	2.50 A	
23254687515	Tool Set	No Mfg	23254687515	83	5.99 A	

Inventory Detail
No Mfg 101 101 Paper towels
Cat Paper Products
Sub Paper Products
City on Hand 113 Qty On Order 10 Retail 0.00 Cost 4.79 PriceA 6.70 Split 0.00
City Available 113 Qty To Order 0 Our Price 6.70 Freight 0.00 PriceB 6.70
City Out 0 MinMax 0 0 MinPrice 0.00 VC-cost 4.78 PriceC 6.70
Prem Vend 111 101 Pearl Corporation Ven LCost 4.78 Ven MCost 4.78
Sel Code House Hold Products MM Code Created 06/05/2009
Weight 0.00 Season Status Locator 06/05/2009
Unit 0 Warranty 0
Date Rec 06/19/2009
Invoice PO 1801
City Rcvd 80
Buttons: Sales, Order, Receive, Inventory, Use Exp, Display Product, Image, Master Image, Local Image, eBuy, Exit

Active-e

Active-e will assure that you have the ultimate Secure Internet Presence:

A complete e-commerce suite providing retailers with shopping cart capabilities and interaction with AIMsi.

An internet presence provided so that you can add your store's unique personality...no cookie cutter look...sets you apart from the competition.

- Many options for calculating shipping charges or specifying free shipping.

Use real time rates FedEx,UPS,DHL,USPS.

- Customer wish list.

- Static product & category pages: Designed to allow search engines to fully crawl and index EVERY product & category page in your store. This can have a dramatic increase in site traffic from search engines.

- Product descriptions can include HTML formatting.
- Coupons.

- Skin Based UI Customization: Store site styles and web design can be completely customized by external HTML skin template and style sheets.

- Change skins in real-time. You can conceivably have 100+ skins for a single store if you need to.

- Automatic e-mail notification to customer with receipt.

- Automatic e-mail notification to store admin of new order received.

- Notification to cell phone of new order received.

- Customer can easily re-order any prior order.

- Credit Cards can be processed & verified in real-time or you can delay processing until a later time.

- Can set a minimum order total threshold for proceed to checkout.

- Catalog Only Sites (i.e. turn buy buttons off).

- Advanced Product Search Page (by category, manufacturer, price range, SKU, etc).

- Pricegrabber and Froogle gen-

Feed Supported -w- automatic encryption and FTP upload to your Froogle account.

- Related Products: Entice additional sales by listing related products/accessories on each product page.

- Product prices can be hidden until product added to cart.

- Products can require that other products are added to the cart (i.e. Product X requires Product Y).

- Customers can review & rate products (if enabled).

- User Polls (Find out what your customers are thinking!).

- Administrator can moderate comments.

- Profanity checking provided on comment entry.

- PCI compliant & PABP Certified.

WEB HOSTING & SHOPPING CART



- Orders automatically brought down into the AIMsi ordering system. No more reentering web sales into your AIMsi system.

- Select what items to include on your website from AIMsi.

- Manage your store via easy to use Administration control panel web site.

- Unlimited number of products.

- Unlimited number of Content/HTML (topic) pages.

- Categories can also be fully nested to any level desired.

- Paged browsing for categories: Keeps page size small and optimizes the user experience. Customers also have the option to "view all" on any page.

Additional Modules

ARCHIVE AGENT

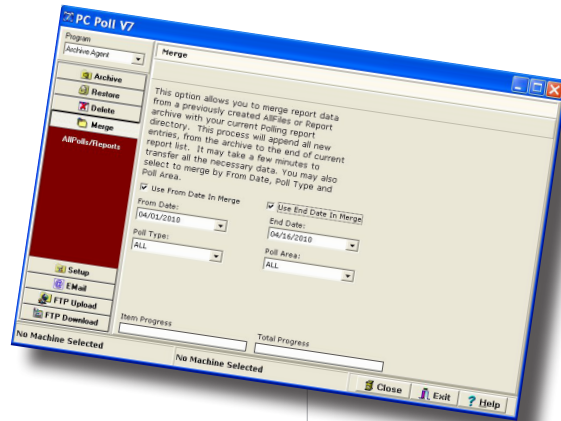
Archives PC/POLL SYSTEMS Polling Inventory and Quick-Books Interface V3 data for all V7 registers. It is a complete backup for all Version 7 products.

Allows users to Archive, Restore, and Delete files from their polling directories.

Data is compressed and stored in Zip files. This program can be used to backup software data and to recover lost data.

Corporate polling features include emailing/FTP options and data file merge.

The software can also be programmed to run automatically via the V7 Polling Calendar.



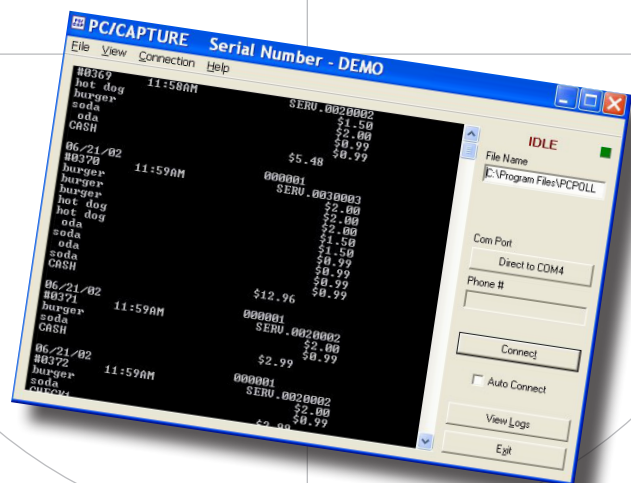
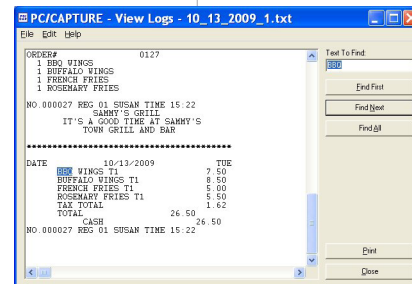
PC CAPTURE

PC/Capture allows users to see detailed transactions from the register in real time. This can be used to catch operational errors or to have a complete history of all register transactions.

The software emulates the functionality of a journal or report register printer at the PC. Connect the PC and collect!

PC/Capture automatically names and creates files. The software can be left running on a continual feed. Users can view the data as it comes in or quickly search through and find critical information via the software's View Logs menu.

Keeps track of each and every sale at the register and stores that information in a text file on the computer.



Additional Modules

QUICKBOOKS INTERFACE

Transfers data into QuickBooks from all supported registers in Version 7 Polling with a few simple clicks.

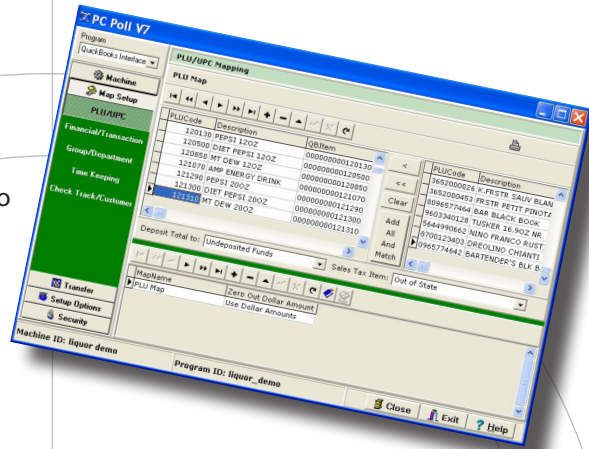
Auto transfer routine for most configurations.

All files are transferred in and out of QuickBooks in IIF format.

Interfaces with QuickBooks 5, 6, 99, 2000—2010 and Standard, Pro and Premier versions.

Use any or all of the following reports from Version 7 Polling to transfer data into QuickBooks:

- PLU/UPC/Scan PLU
- Time Keeping
- Open Check/Customer
- Department/Group
- Transaction/Financial



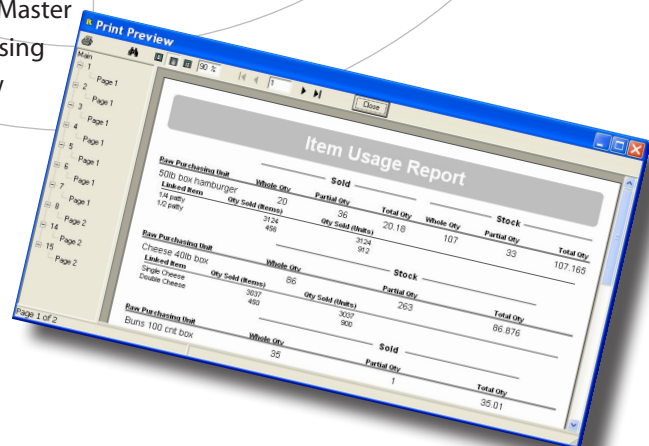
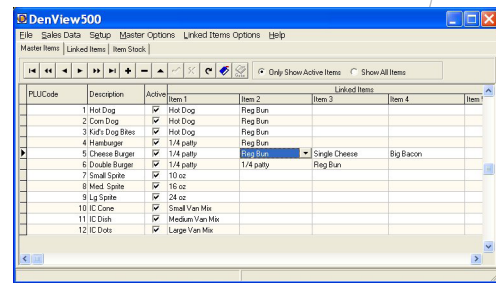
DENVIEW500

DenView500 is a product that interfaces to all Version 7 registers to help bridge the gap between Polling and a full-blown inventory system.

DenView500 allows users to take previously collected Version 7 PLU reports and calculate the usage on assembled items.

This software will allow the user to create a Master Items list of all their PLU items and link up to 5 component items to each of these Master items. The component items are then attached to Raw Purchasing Units. The reports generated reflect the total usage of the Raw Purchasing Units.

Users can also track on hand values.





Control of Your Business at Your Fingertips

Innovation and Integration have always been the cornerstones of Tri-Tech's software modules.

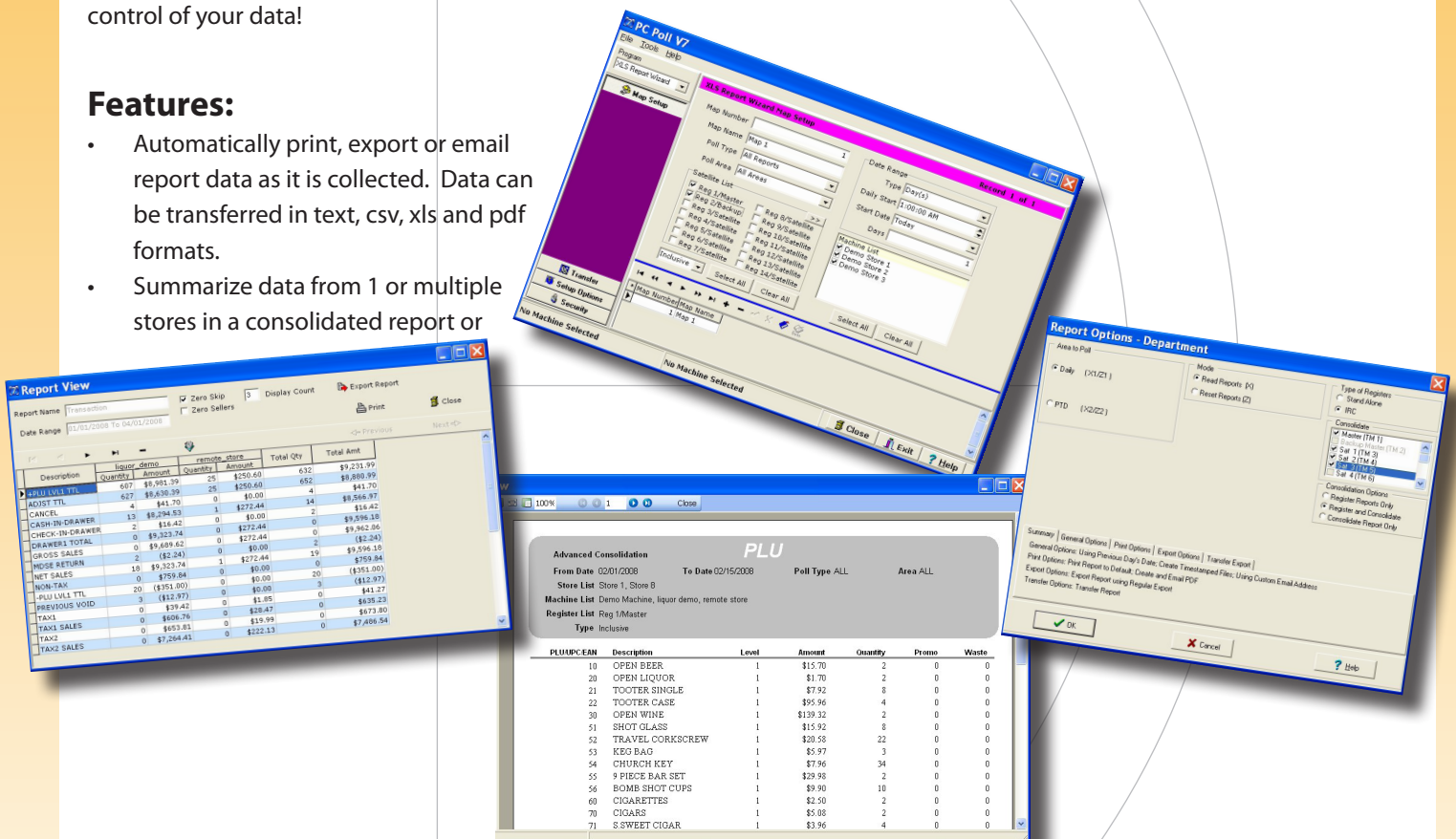
Version 7 Polling is not a cookie-cutter solution. The software contains invaluable tools to help you manage your data and take it to the next level. The features within the software make it quick and easy to connect to the register, edit information and collect important report data. V7 Polling can also be used to bridge the gap between existing company-specific or legacy programs and the cash register. V7 exports data into a variety of formats to allow for limitless interfacing and customization options. Let the software help you take control of your data!

spreadsheet file.

- Automatically export or import program data to allow for editing in other software applications.
- Maintenance area exports allow for partial file importing operations.
- Multiple standard export formats to allow for quick and easy interfacing to multiple software applications, or pick and choose which fields on which reports to export ~ customize!

Features:

- Automatically print, export or email report data as it is collected. Data can be transferred in text, csv, xls and pdf formats.
- Summarize data from 1 or multiple stores in a consolidated report or



www.technology4retailers.com
800.670.1736

3162 Cedar Crest Ridge · Dubuque, Iowa 52003